

Size - 5'11"

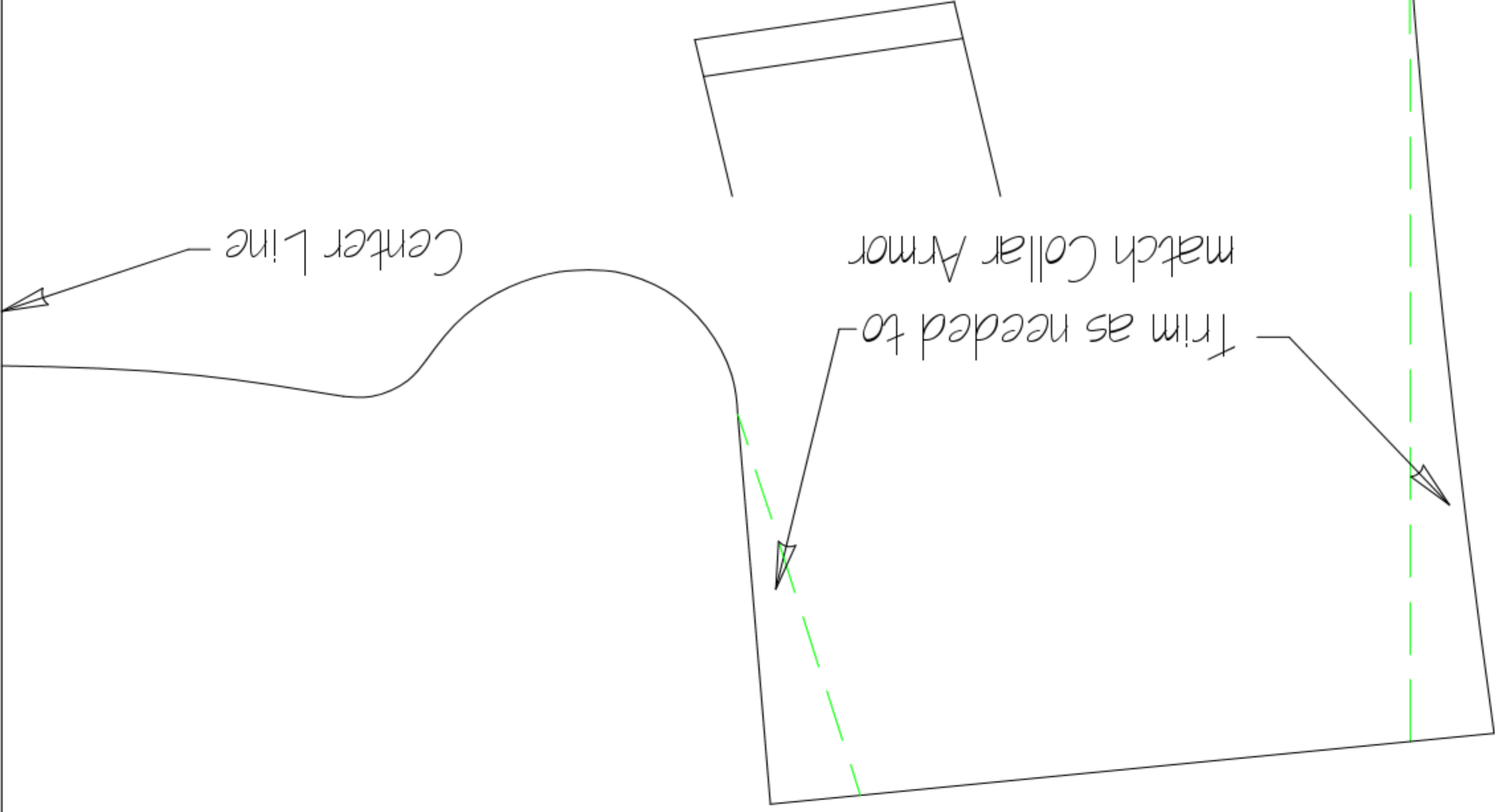


Back Belt Armor Right

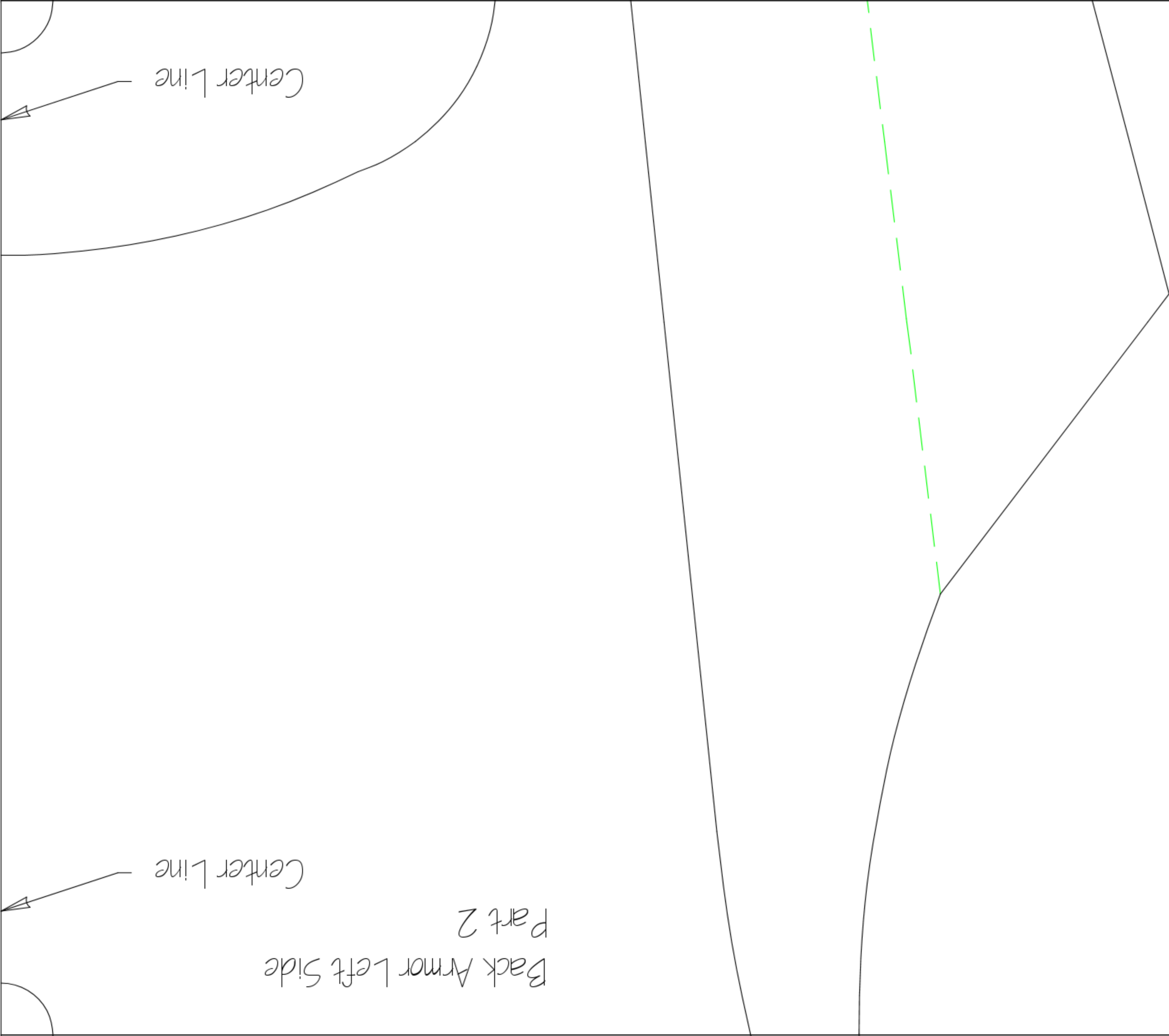


Back Belt Armor Left

Back Armor Left Side
Part 1



Size - 5'11"



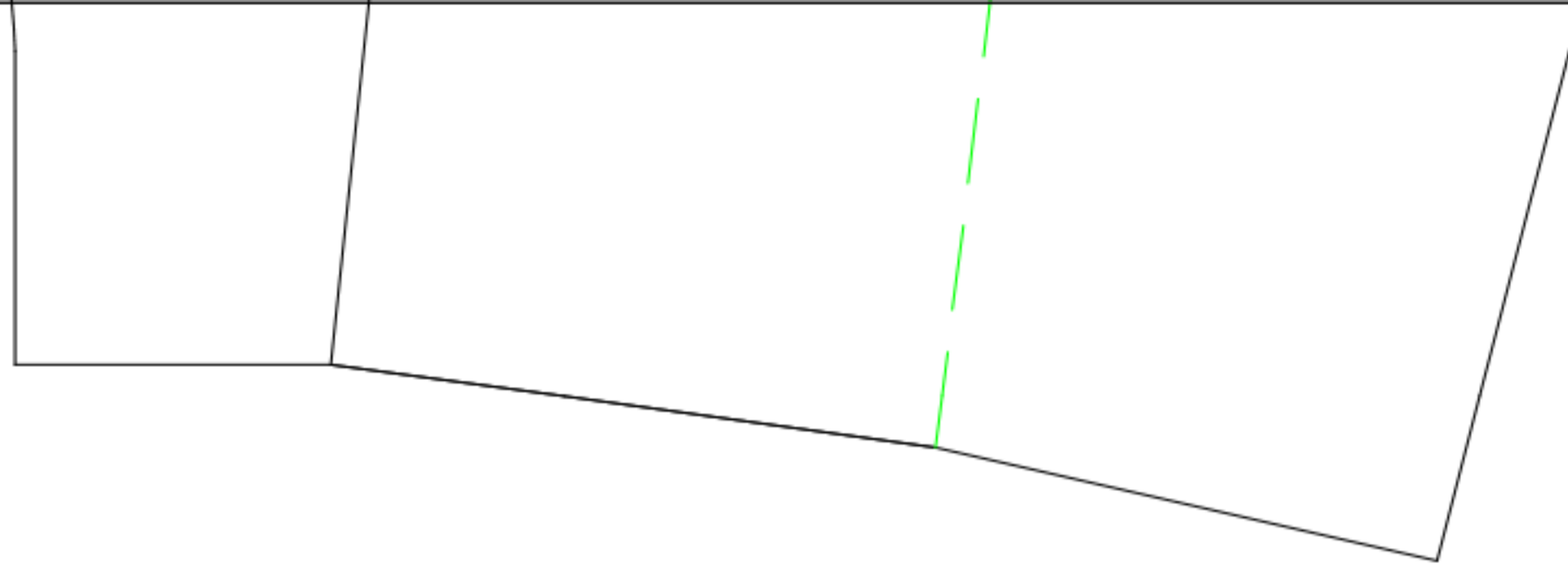
Back Armor Left Side
Part 2

Center Line

Center Line

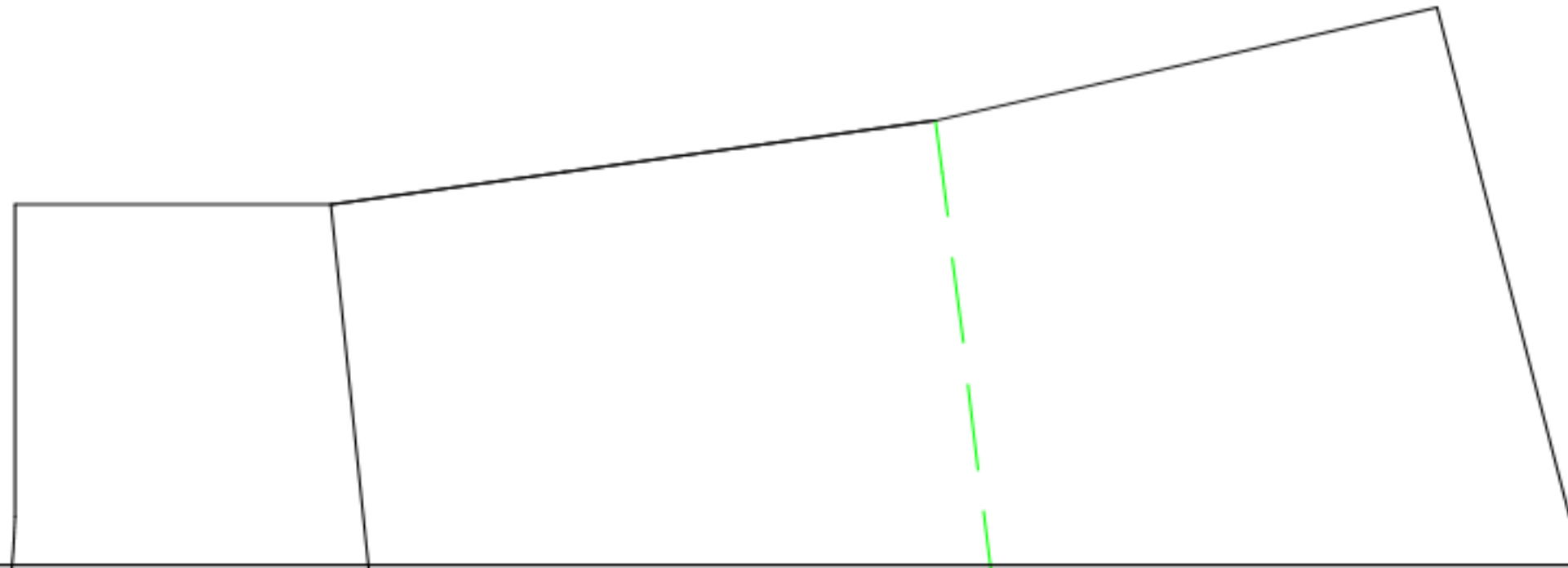
Size - 5'11"

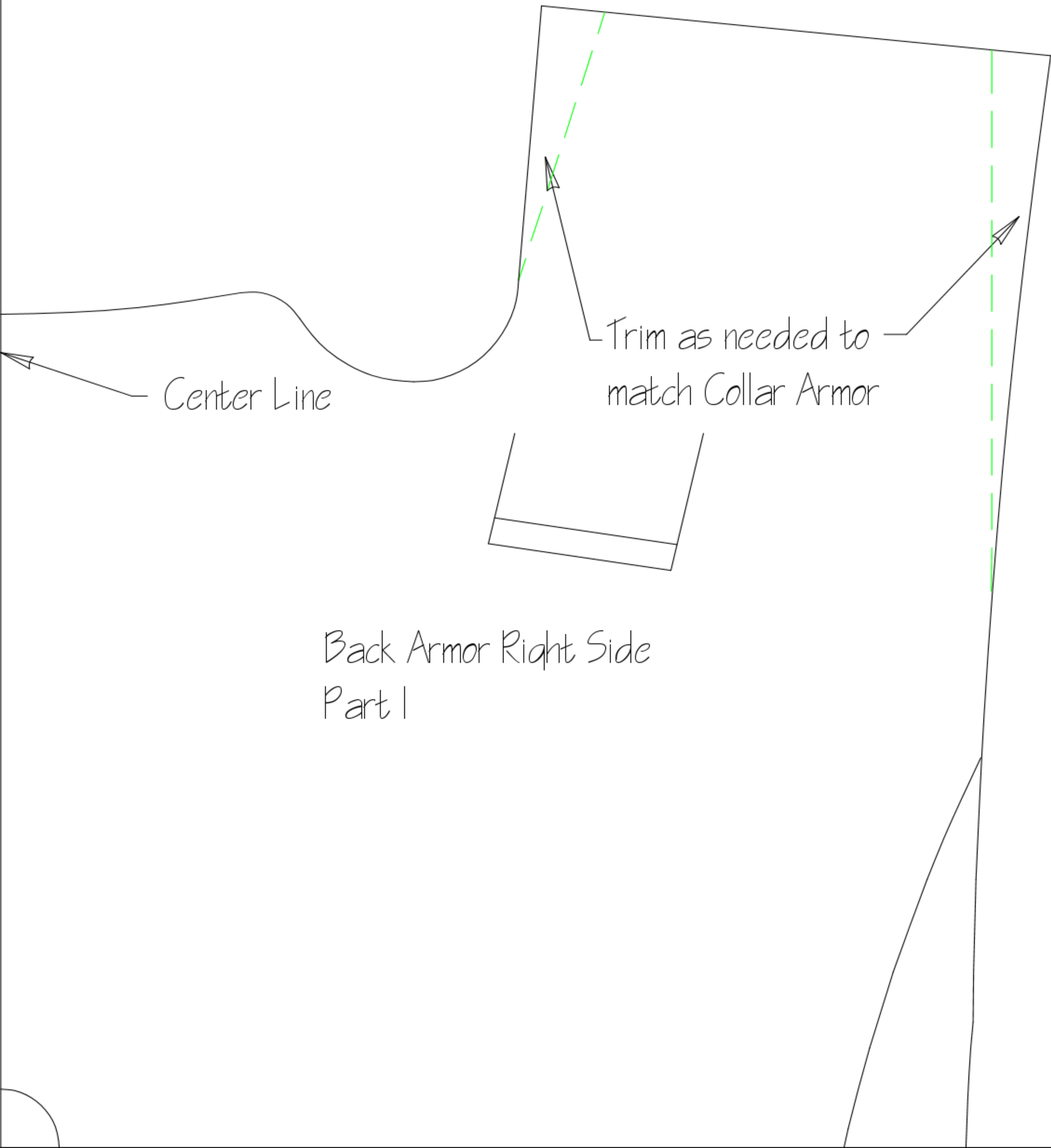
Back Armor Right Side
Part 3



Size - 5'11"

Back Armor Left Side
Part 3





Center Line

Trim as needed to
match Collar Armor

Back Armor Right Side
Part I

Size - 5'11"

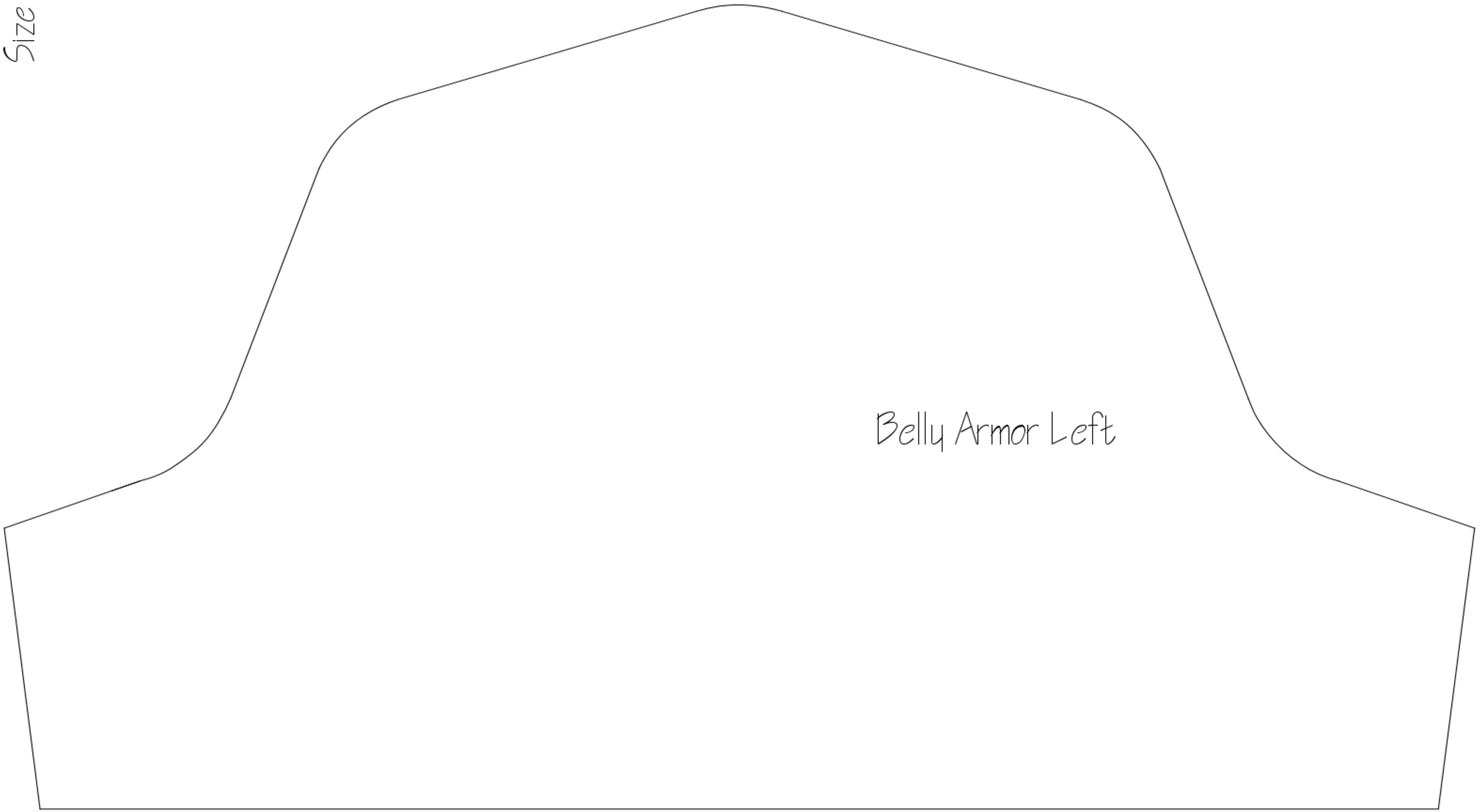
Back Armor Right Side
Part 2

Center Line



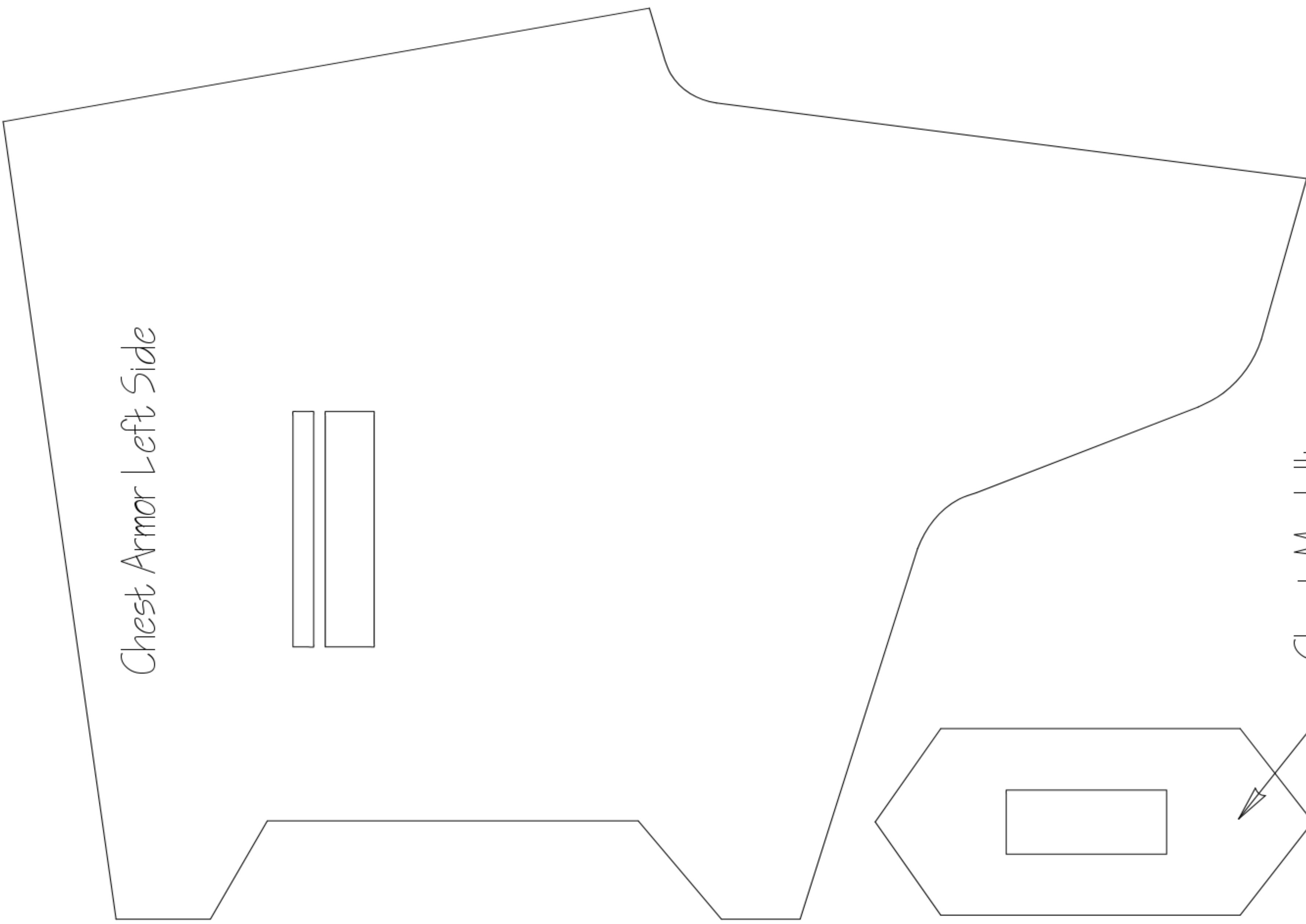
Size - 5'11"

Size - 5'11"



Belly Armor Left

Size - 5'11"

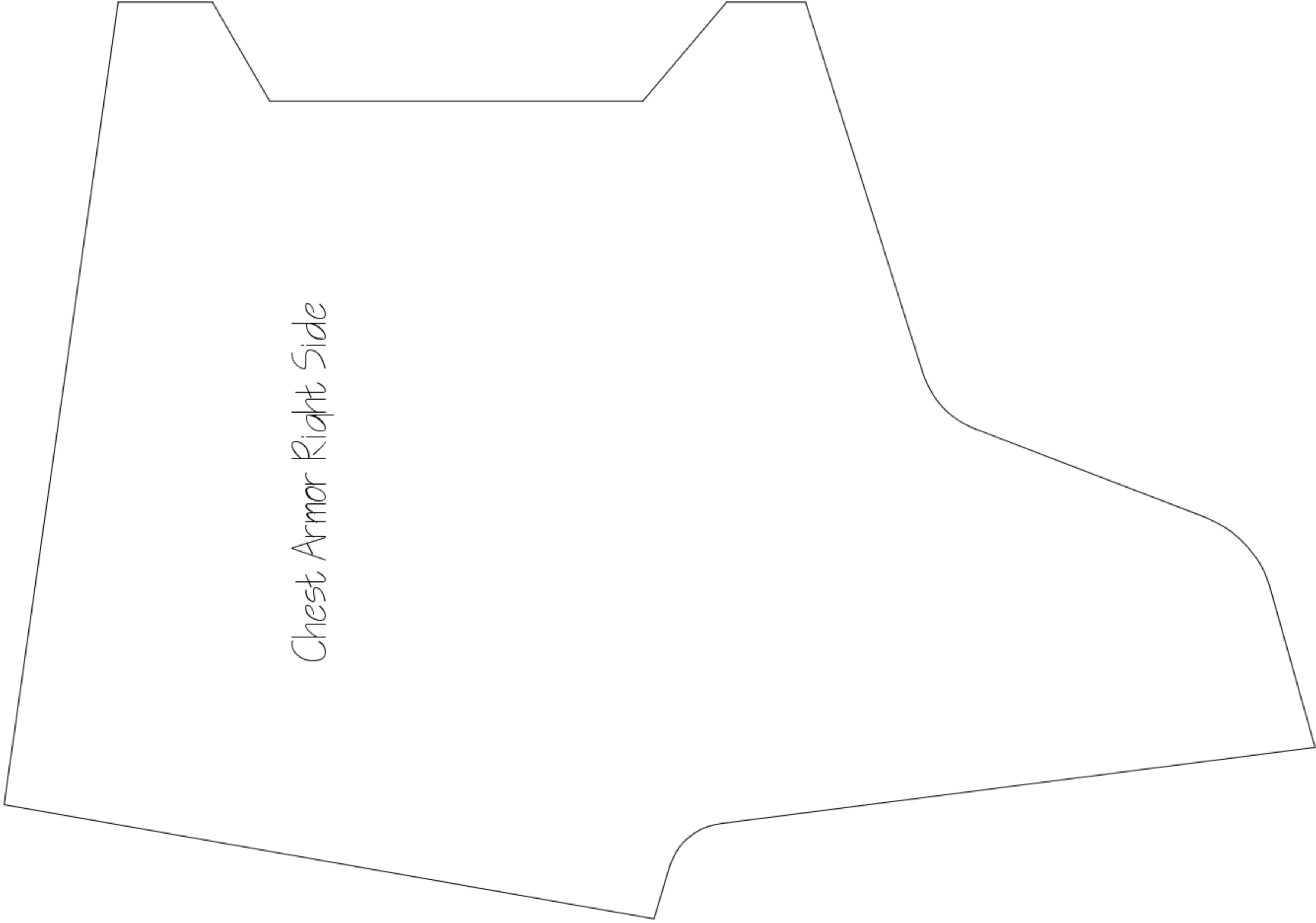


Chest Armor Left Side

Chest Medallion

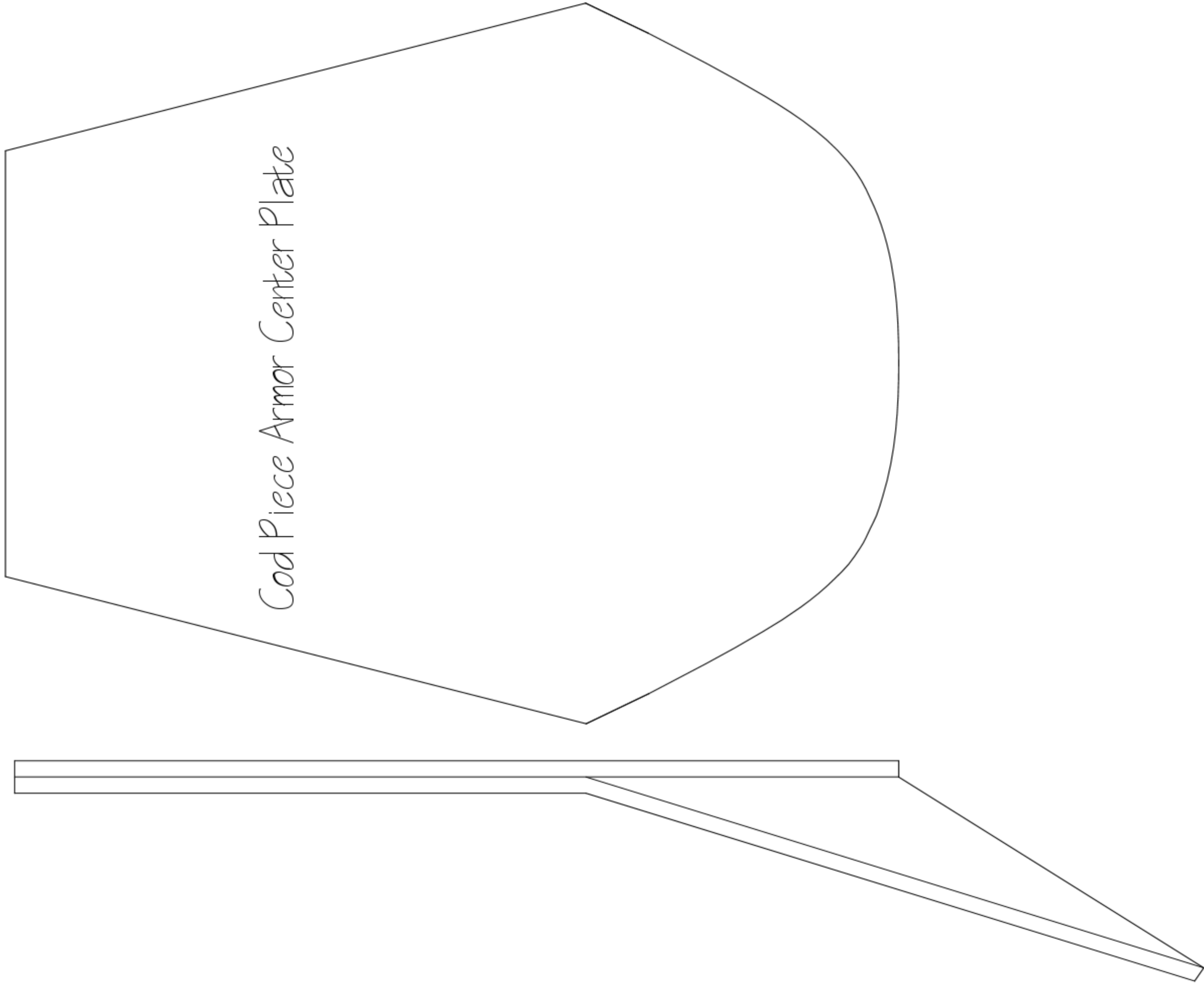
Size - 5'11"

Chest Armor Right Side



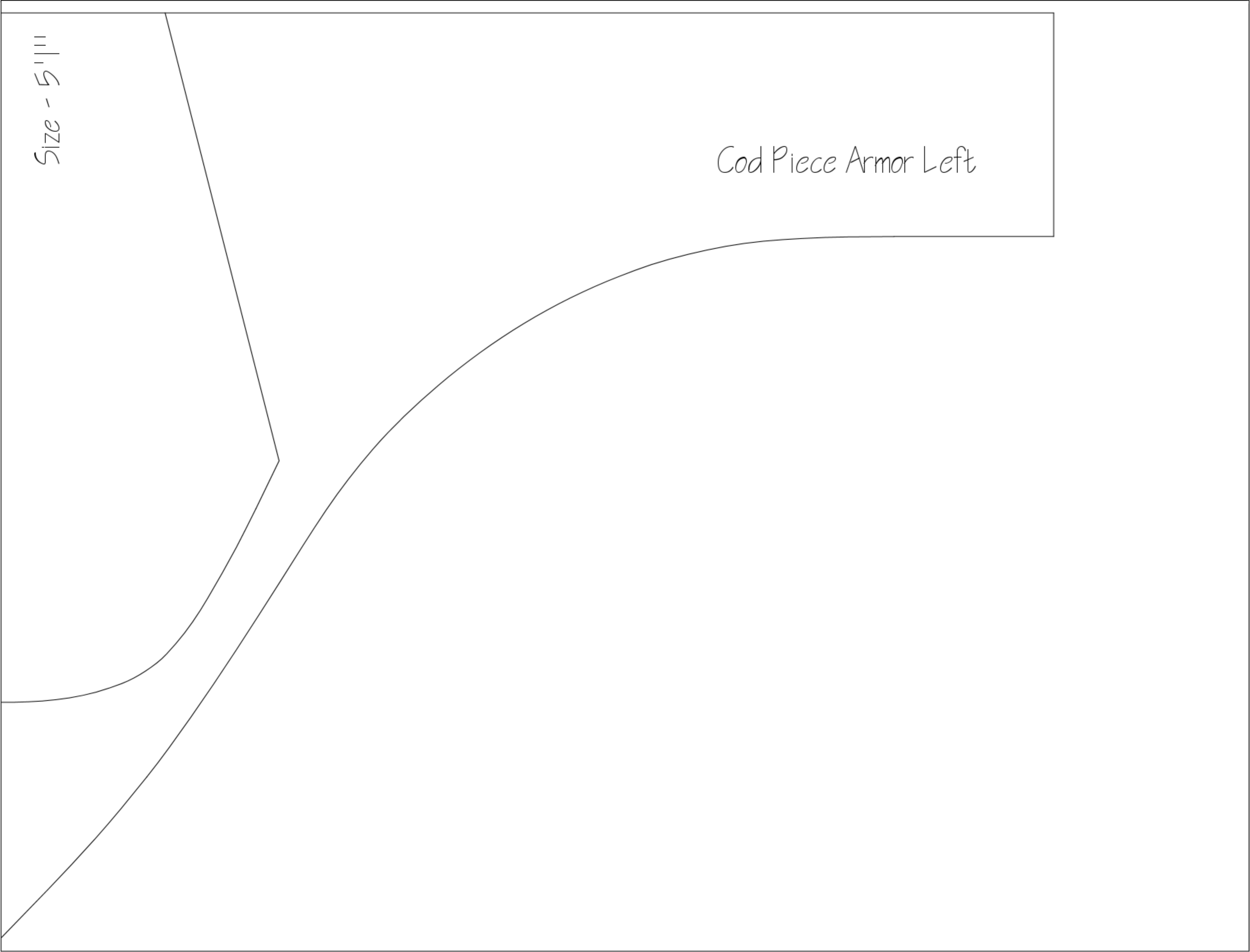
Size - 5'11"

Cod Piece Armor Side View



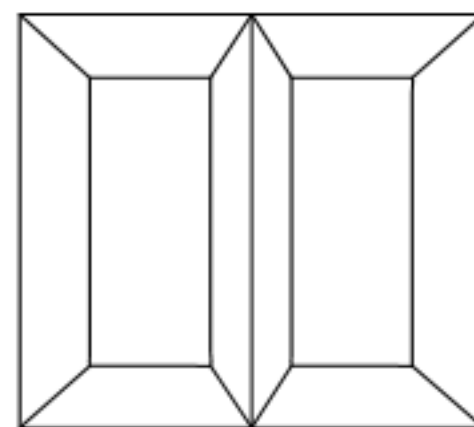
Size - 5'11"

Cod Piece Armor Left



Size - 5'11"

Cod Piece Armor Right



Size - 5'11"

Collar Armor Left Side

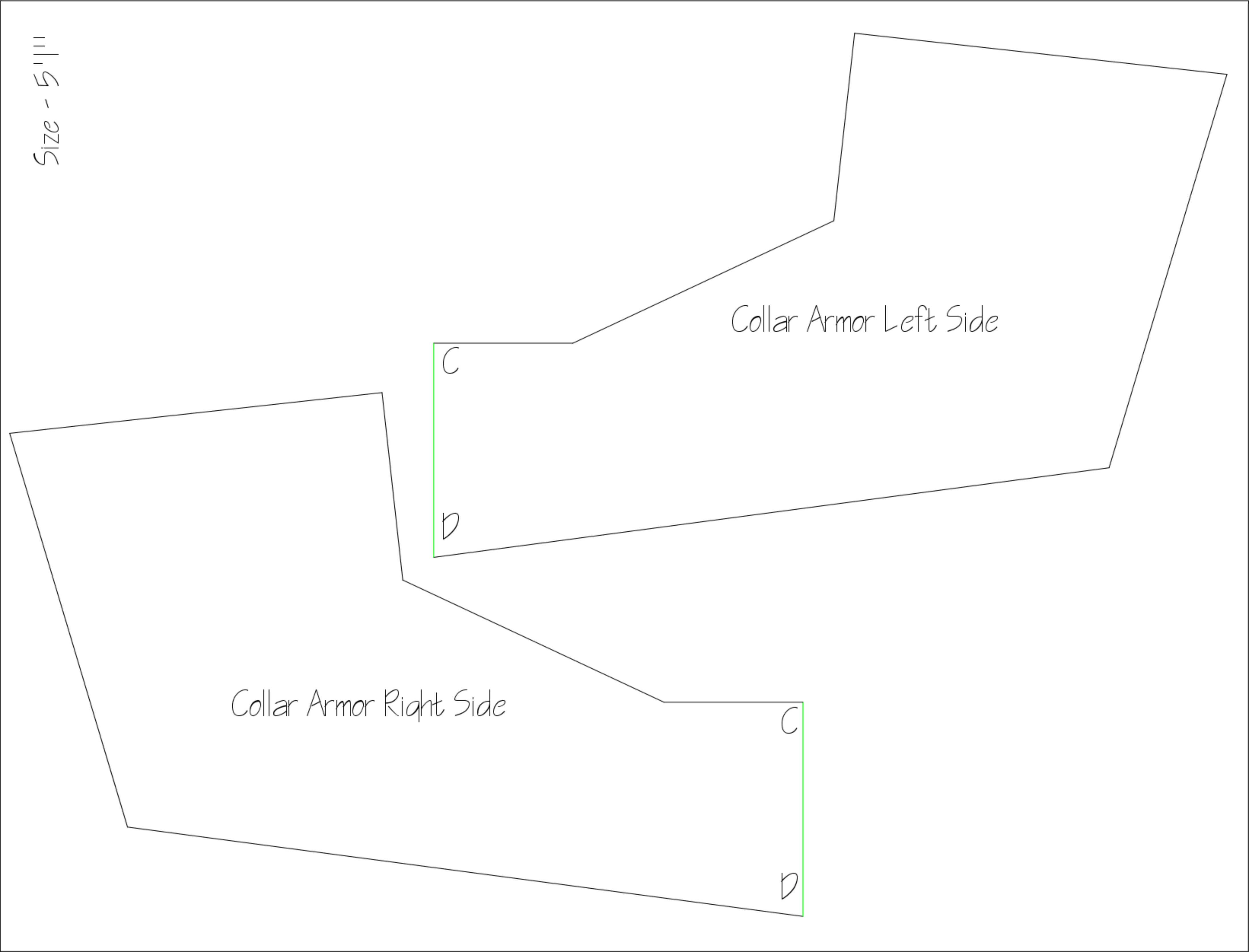
C

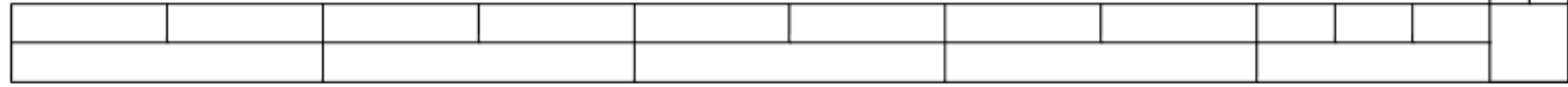
D

Collar Armor Right Side

C

D



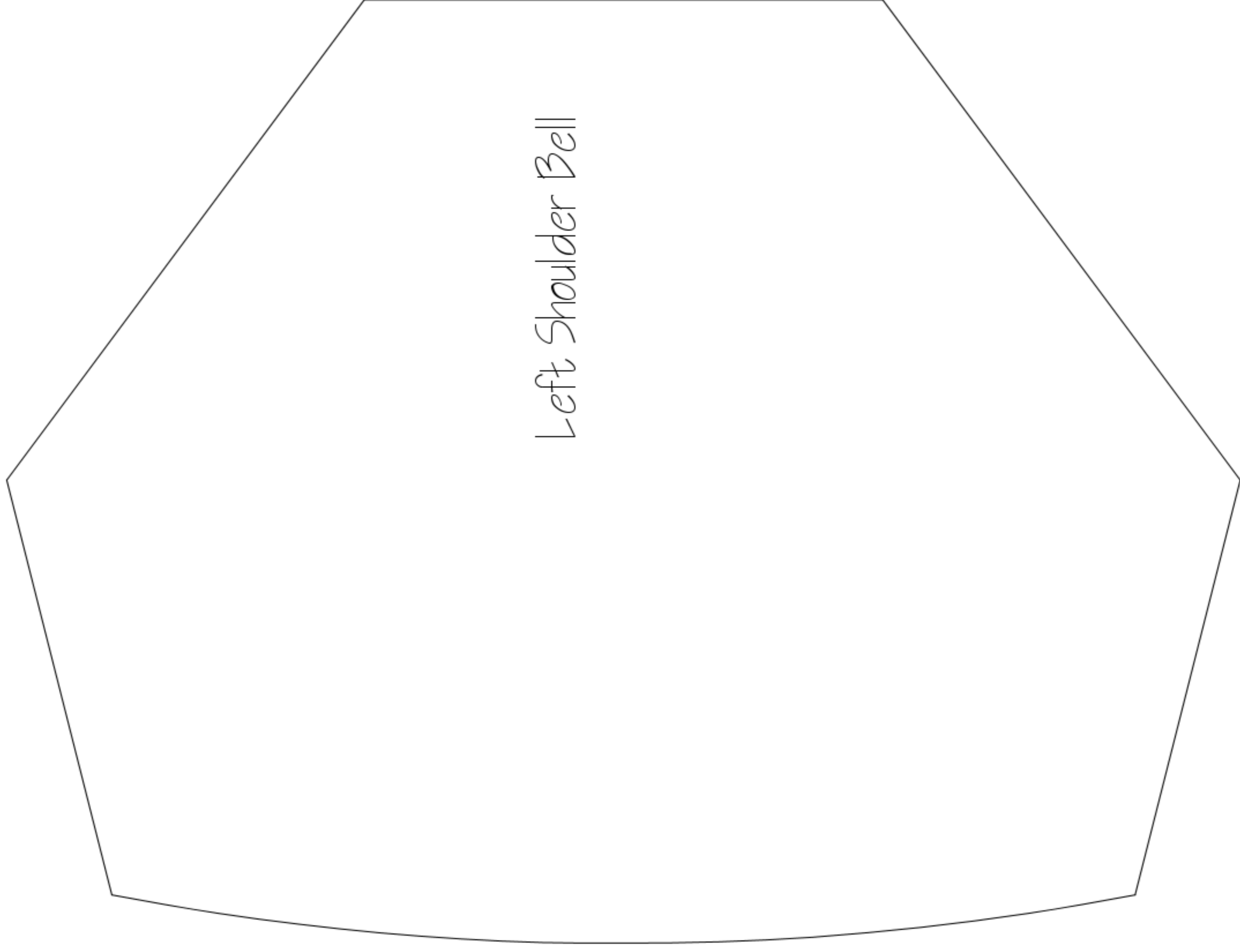


Printer Scale Test Sheet
Assumes .25 inch Border

The Scales are 5" in each direction

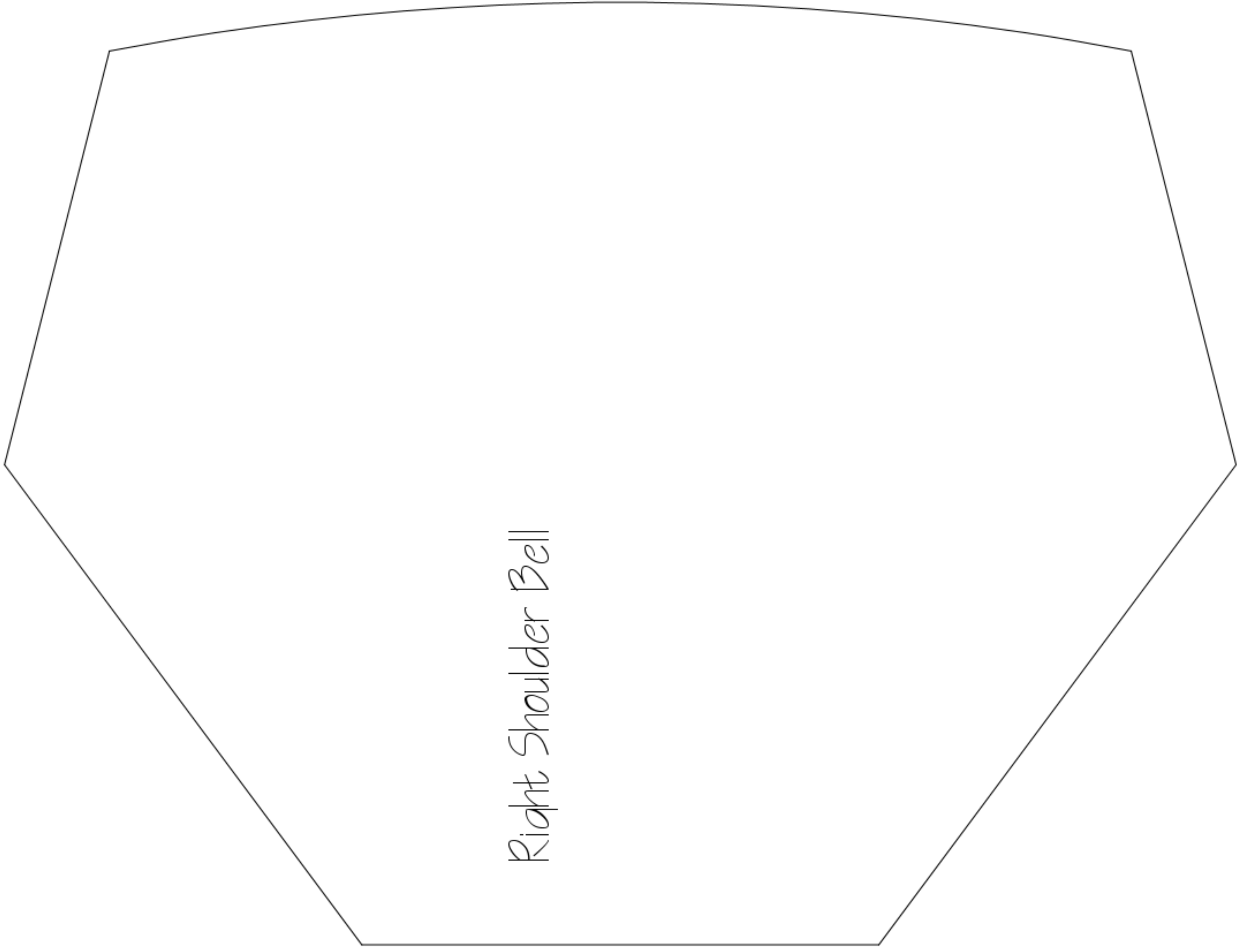


Size - 5'11"



Left Shoulder Bell

Size - 5'11"



Right Shoulder Bell